

Expert Connect

Connecting Industry and Research

Zoe Piper

Former IC Global
Lead at CSIRO
2016 - 2020

Expert Connect

<https://expertconnect.global>

A single place for industry to find and connect with Australia's research expertise

- **Researcher Profiles:** over 90,000 researchers from over 220 Australian research organisations, covering all fields of research
- **Industry Engagement Tracking:** functionality that assists universities streamline government reporting on end-user engagement
- **FindHer Filter:** option to filter search results to find female experts

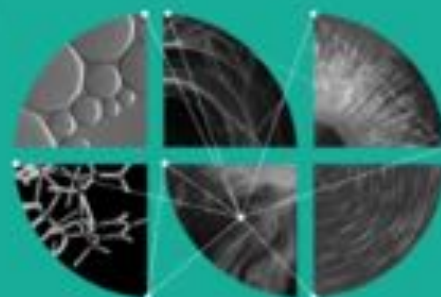
Key Principles

- **Collaboration:** developed in collaboration with over 70 partners from across industry, research and government
- **Leverage existing data:** automatically draws in data from authoritative sources (journals, patents, grants etc)
- **Open data:** all data available to be embedded in other websites
- **Bridge the language divide:** allow non-experts to search in their own words
- **Relevant search results:** consider industry nous when ordering search results
- **Done is better than perfect:** move fast and continue to iterate



Expert Connect

Designed to boost industry-researcher collaboration, Expert Connect provides access to business savvy research expertise. [Learn more](#)



Connect to research expertise

[Find Experts](#)[FindHer](#)[Search tips](#)[Options](#)[What's new?](#)

Claim/update your profile

[Find Experts](#)

Featured Experts

[View all Experts](#)

Dr Eun-Pa Lim

Professional experience: 2006-current: Research Scientist at the Bureau of Meteorology Education; 2005: The University of Melbourne, AUS; PhD Research Interest: Australia...



Megerisa Walo

A highly regarded cross-disciplinary researcher in the fields of social sciences - including place-based development, value/supply chains, networks, social cohesion, social...



Prof Shazia Sadiq

Shazia Sadiq is currently Head of Research for the School of Information Technology and Electrical Engineering at The University of Queensland, Brisbane, Australia. She is part...



Found **7063** Experts relevant to **"innovation"** How was this search result determined?


Select expertise indicators most relevant to you



Martie-Louise Verreyne

RMIT University

 Media Articles: 4 / 6

 Academic Publications:
25 / 108

Martie-Louise Verreyne is a Professor in Innovation and Entrepreneurship at the UQ Business School. Her research in small firm innovation and resilience focuses on how these firms leverage capabilities and networks to gain a competitive edge. A current ARC Discovery grant broadens this to look at the processes and technologies of open innovation. Martie-Louise is a regular contributor to...

[READ MORE >](#)

Innovation and Technology Management

Small Business Management

Entrepreneurship

Relevance score



Is this You? [Claim your profile](#)



Matthew Rimmer

Queensland University of Technology

Broader IC Global Platform Suite



**Innovation
Challenges.**



**Innovation
Map.**



**Expert
FindHer.**

Innovation Challenges

<https://innovationchallenges.global>

- **Challenge Listings:** users can put forward details of the problem they are looking to solve
- **Challenge Aggregation:** the platform aggregates challenges published by state/federal government, corporates, NGOs etc
- **Problem-Expertise Matching:** challenges listed are flagged with relevant experts who are encouraged to put forward innovative solutions



Innovation Challenges

This marketplace aggregates challenges, matching them to relevant experts. Contribute your expertise or get your challenges solved in innovative ways.

[Learn more](#)

Search



Subscribe to alerts



Submit a challenge



View Challenge Programs



Sort: Date



Audiences: Any



Challenges: Open



Reset Filters

Showing eighteen (18) challenges open for application



LONGITUDE PRIZE

Expanding the use of fertilization



Evolution 2.0 Prize



Heart

®

Heart Foundation Research Challenge

InnovationMap

<https://innovationmap.global>

- **Customisable**: users can turn layers on/off to build up a rich picture of a region and see how the data changes over time
- **Federated Data**: data remains owned and hosted at its source
- **InnovationMap visualises:**
 - Innovation Precincts
 - Selected Research Infrastructure
 - Australian Innovation Data (gathered by the government)
 - Any dataset from data.gov.au (added by the user)



Innovation Map

InnovationMap is an interactive, geographic visualisation of innovation related data. Explore the available datasets or add your own. [Learn more](#)

 **NATIONAL
MAP**
National Government

DATA SETS (3)

☒ **National Research Infrastructure**

Managing Organisation

☒ CSIRO

☒ ANSTO

☒ ADRI

☒ RemoteSense Australia

☐ Display Variable

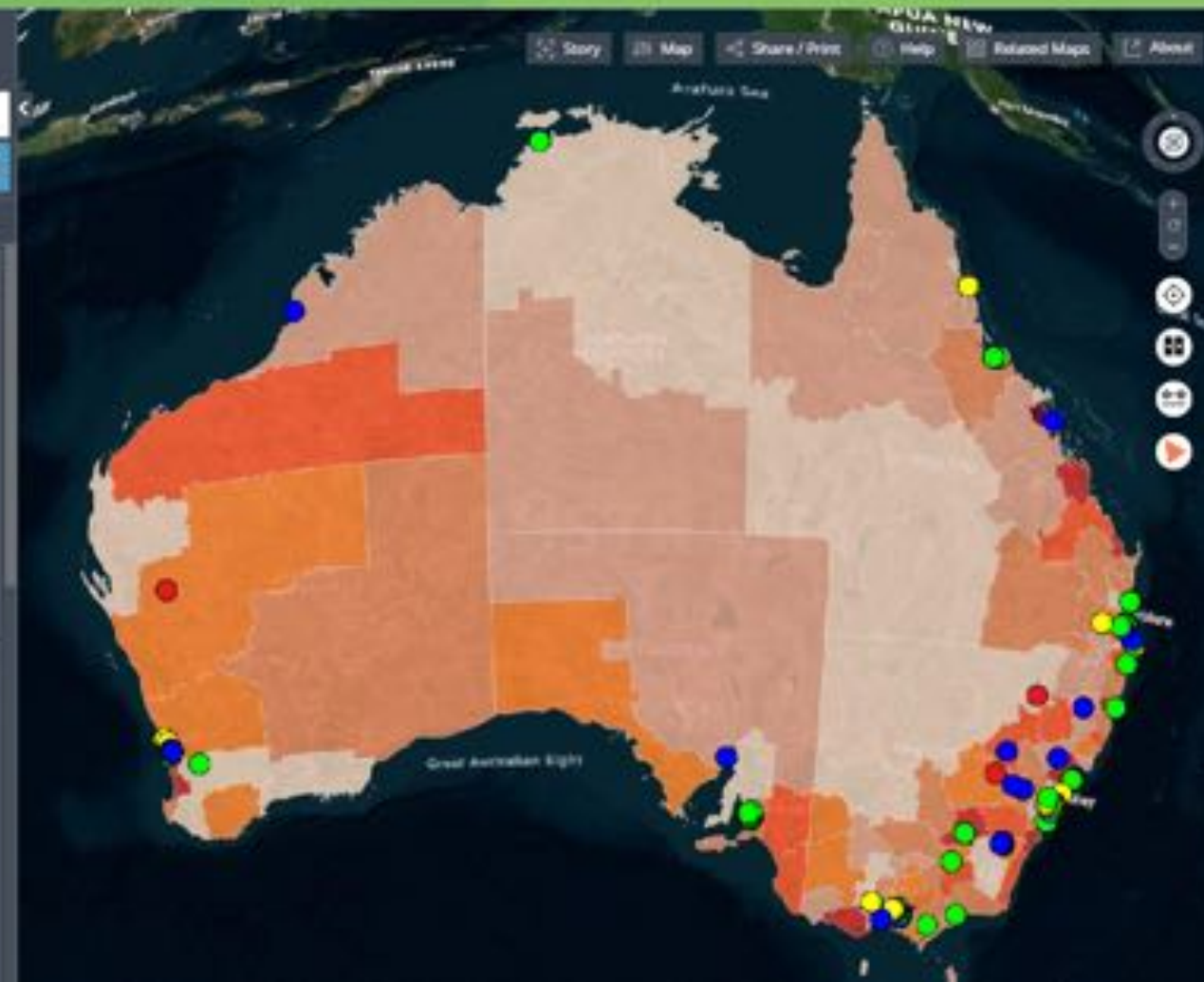
☒ Managing Organisation

☒ **Innovation Precincts - June 2019** **Status**

☒ Active

☒ Emerging

☒ Planned

☐ Display Variable☐ State

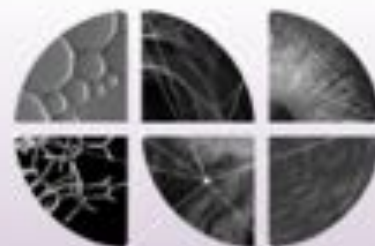
Expert FindHer

<https://expertfindher.global/>

- **Expert Profiles:** displays a subset of Expert Connect data – profiling over 5,000 women from across all fields of research
- **Resources Directory:** directory of resources to empower women (developed in collaboration with the Australian Federal Department of Industry, Science, Energy and Resources)



**Expert
FindHer**
BETA



Designed to boost gender equality, Expert FindHer features women from all fields of research. [Learn more](#)

Resources Directory

The Expert FindHer Resources Directory provides information about funding sources, programs, networks and tools that can help women entrepreneurs.

[View Directory](#)

Connect to research expertise

[Search](#)

Featured Experts

[View all experts](#)

Asha Rao

Asha Rao is an Associate Professor in the School of Mathematical and Geospatial Sciences at RMIT University Melbourne and an expert in information security. Part of her research interests include the mathematics underpinning quantum cryptography, coding theory, and risk management. This includes the...



Dr Sally Wasel

I am a Research Fellow in the Australian Research Centre for Human Evolution. Sally Wasel is a research fellow in paleogenetics. Sally's primary focus over the past 10 years has been the study of ancient DNA from the Egyptian mummies. While living in Egypt she contributed to research projects aimed...



Katarina David

I am a principal hydrogeologist with 18 years experience in hydrogeology and groundwater management. I have a BSc (Geology) and MSc in Hydrogeology and have worked on infrastructure, agriculture and mining projects on a number of groundwater assessments. I am a full time PhD student at present with...

Building Engagement

- Partners & Collaborators
 - Provided access to data
 - Used data to display researchers and/or challenges on their own websites
 - Interested in using platform data for research
- Advisory Groups
 - Advised on platform functionality
- Ambassadors
 - Promoted the platform to their networks

Additional Functionality

Expert Connect was a essential starting point – however there was demand for additional functionality

- Option to easily engage a researcher via the platform (with template agreements)
- Connection into other relevant services & funding programs
- Serving other user cases (PhD students seeking supervisors, media etc)
- Building profiles of institutions or regions (to understand their relative strengths)
- Recognising the global nature of research

Questions?

<https://innovationcatalyst.global>

<https://zoepiper.com.au/> | zoe.piper@delmata.com.au | <https://www.linkedin.com/in/zoepiper>